

Figure 7.16: Secular Bull Markets since 1900

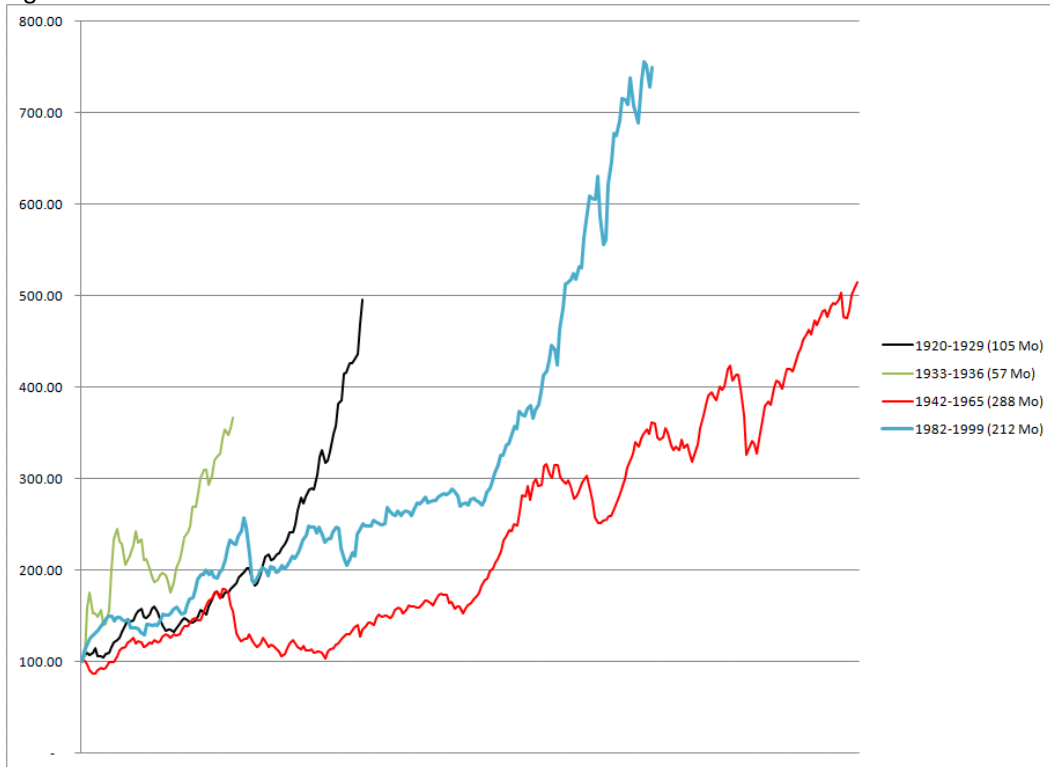


Figure 7.17: Secular Bull Market Composite

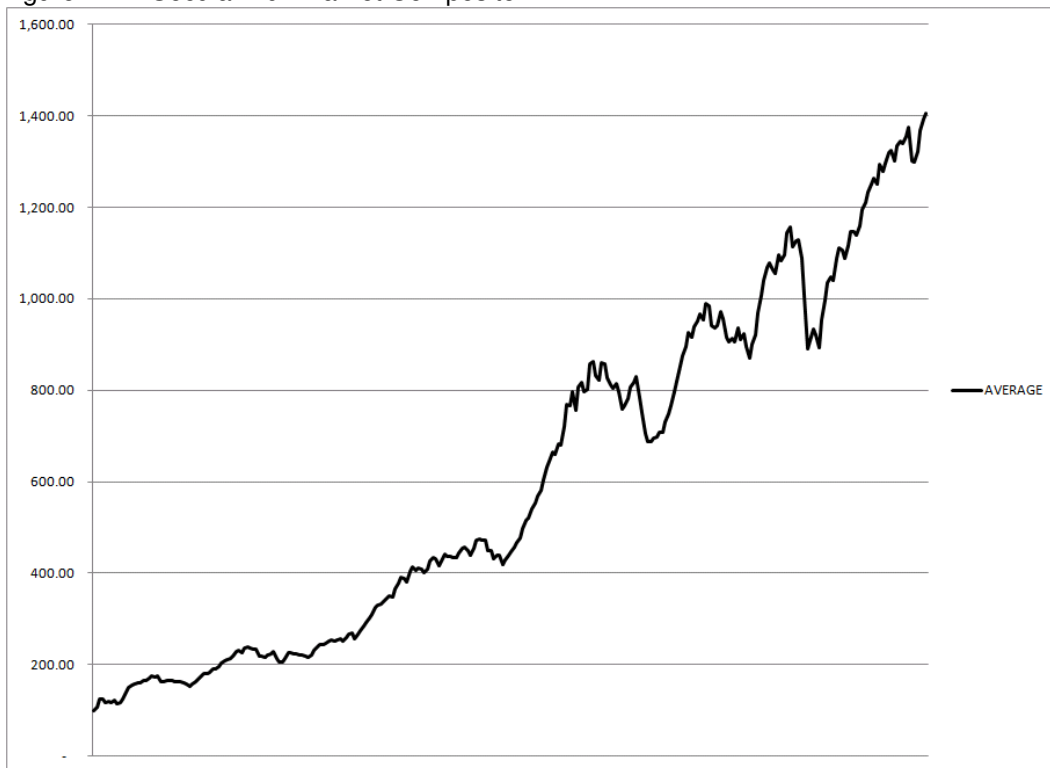


Figure 7.18: Secular Bear Markets since 1900

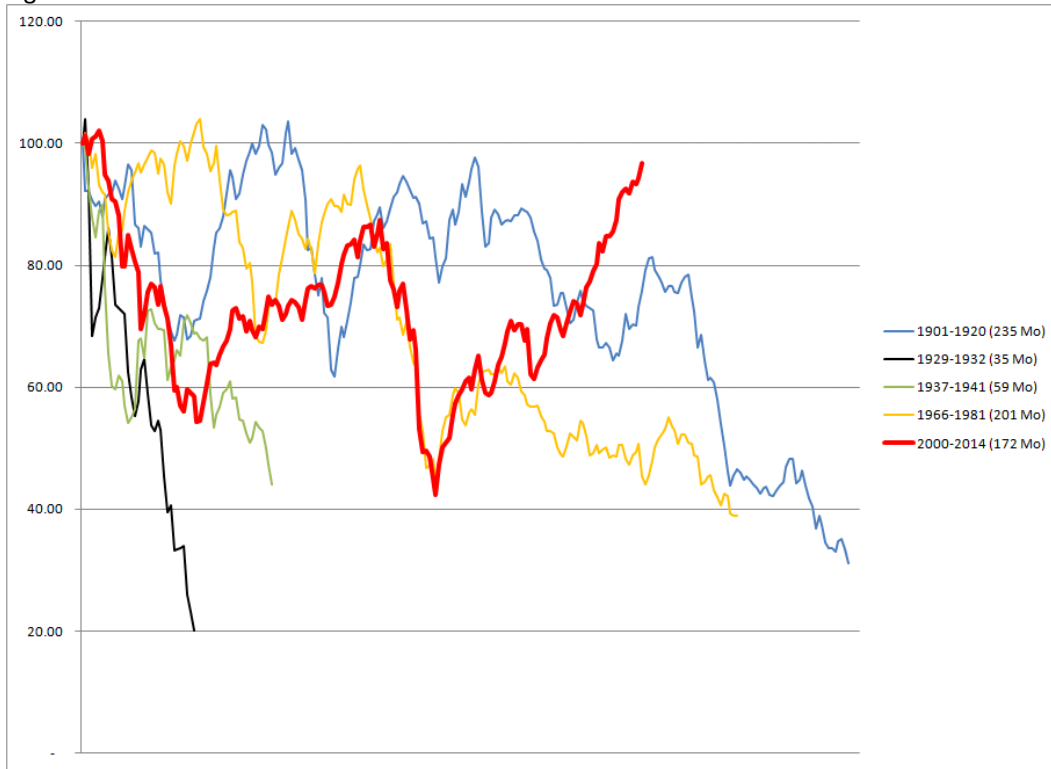


Figure 7.19: Secular Bear Market Composite



Figure 8.3: Secular Bear Market PE since 1900

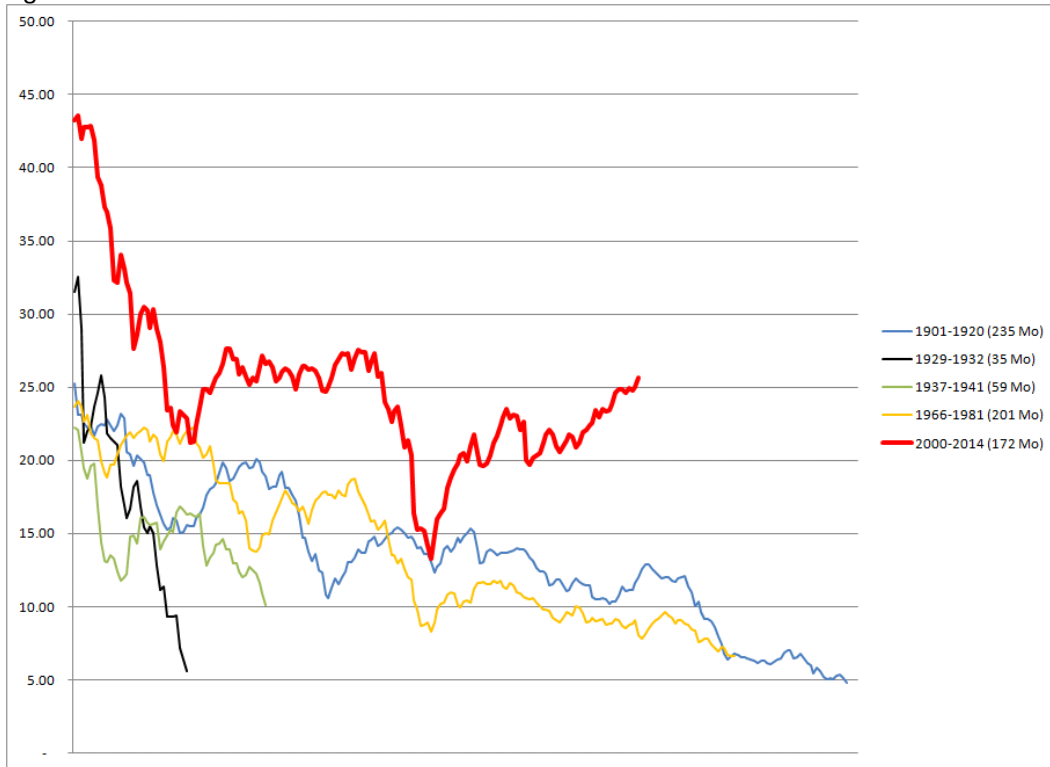


Figure 8.4: Secular Bear Market PE Composite

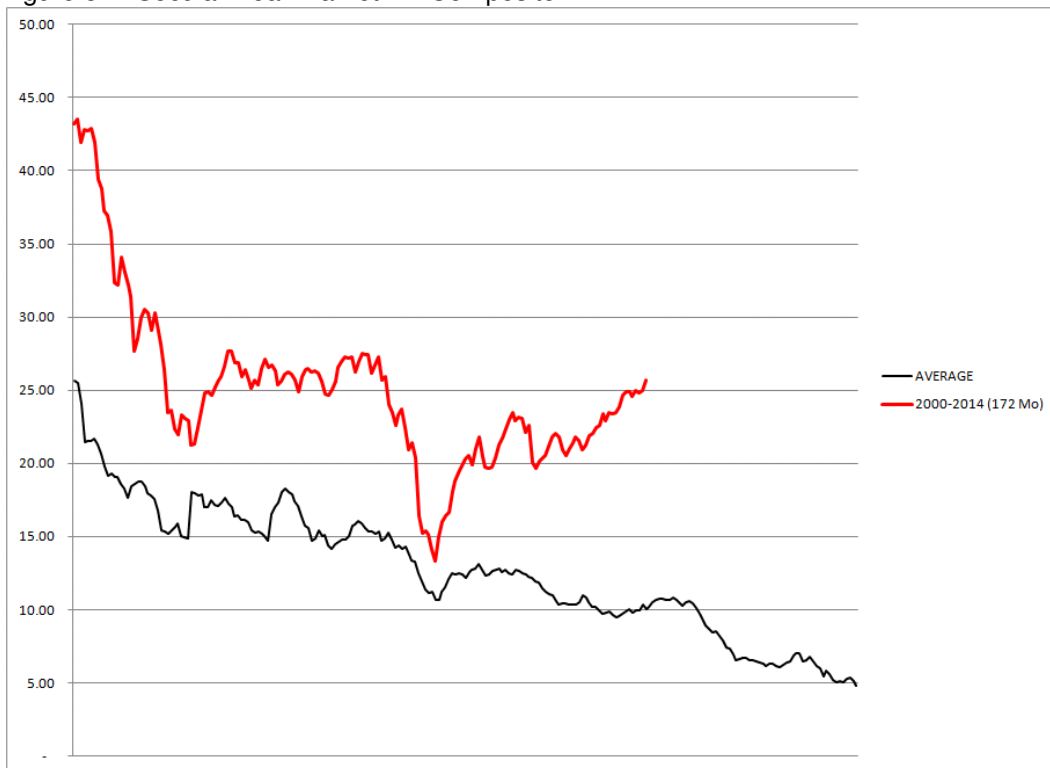


Figure 8.5: Secular Bull Market PE since 1900

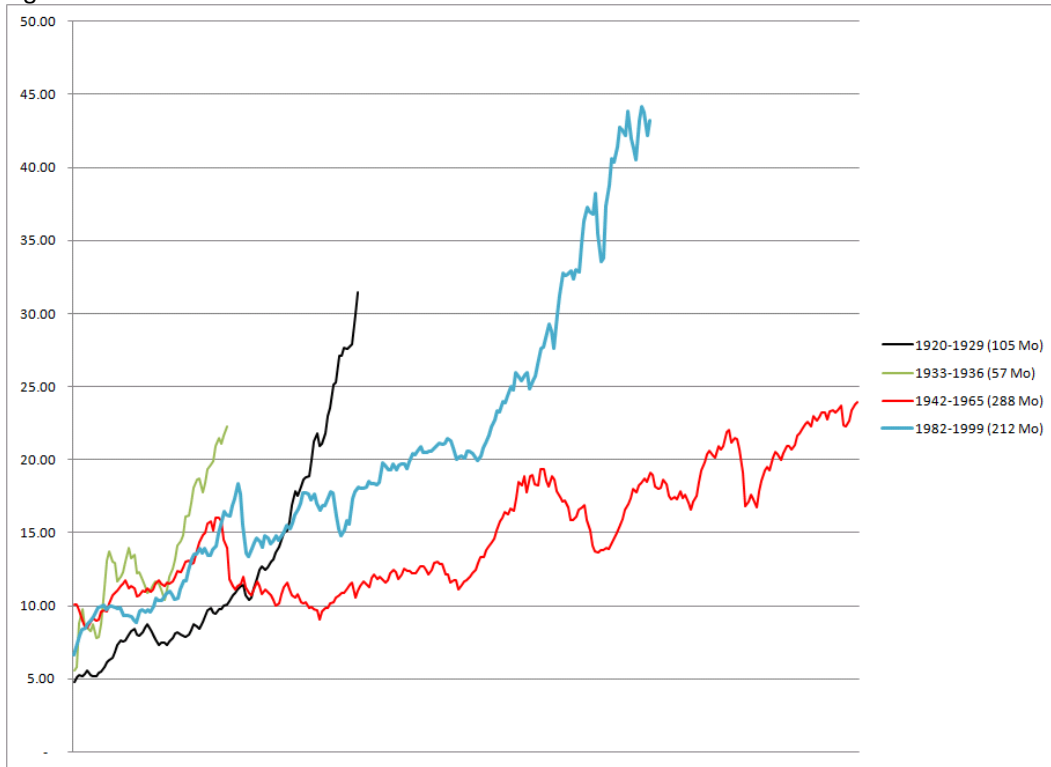


Figure 8.6: Secular Bull Market PE Composite

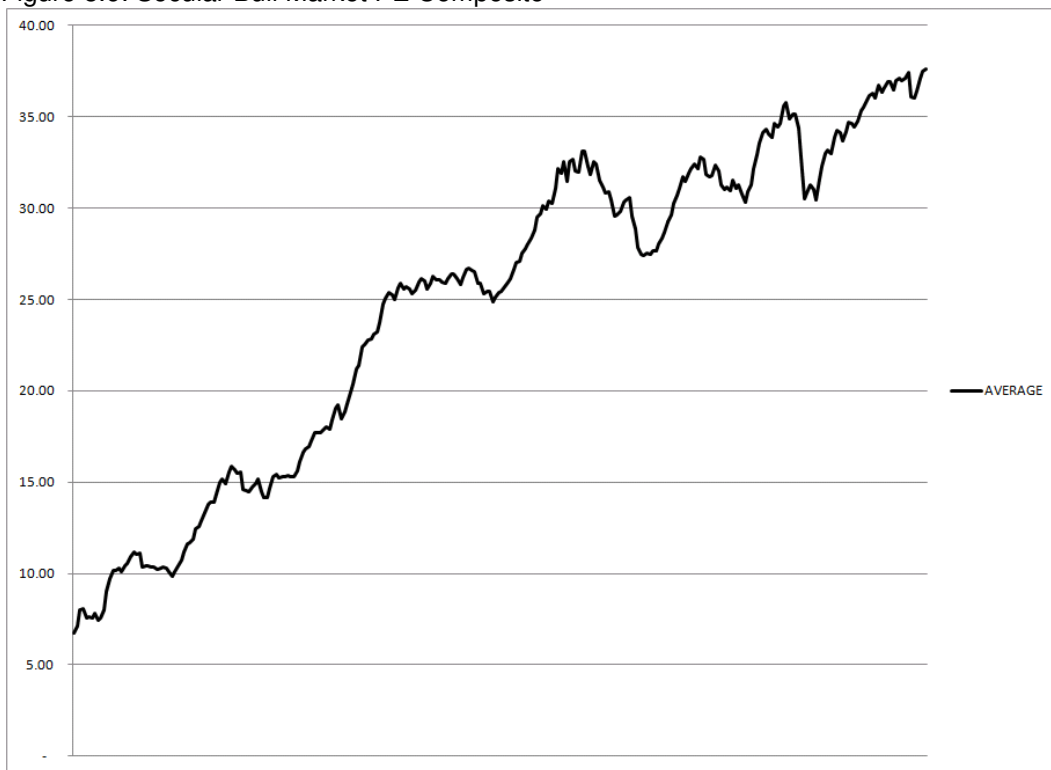


Figure 8.18: 20-Year Annualized Return of S&P 500 Price

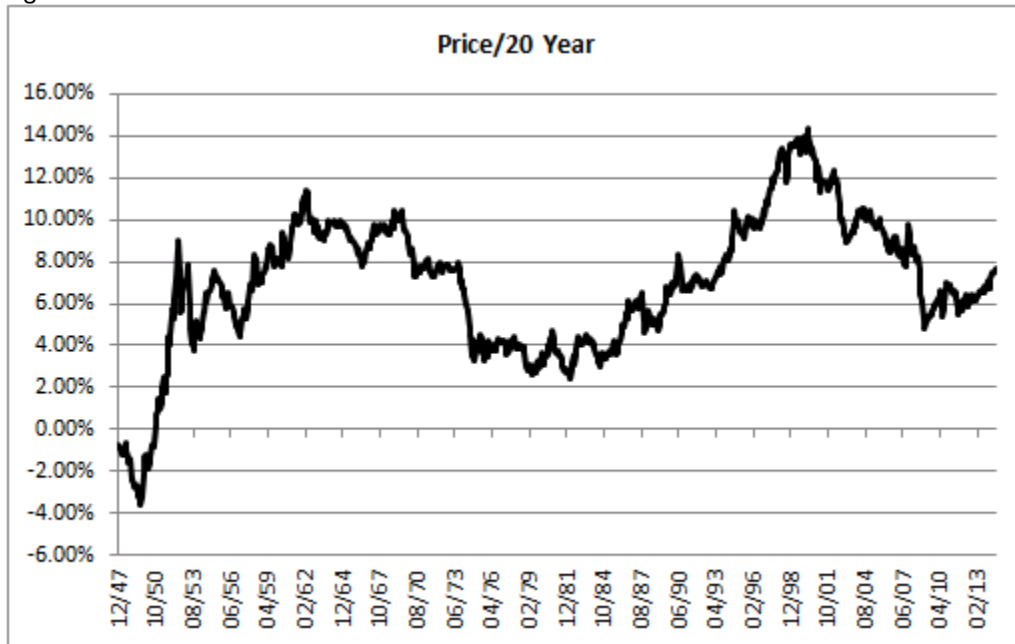


Figure 8.19: 20-Year Annualized Total Return for S&P 500

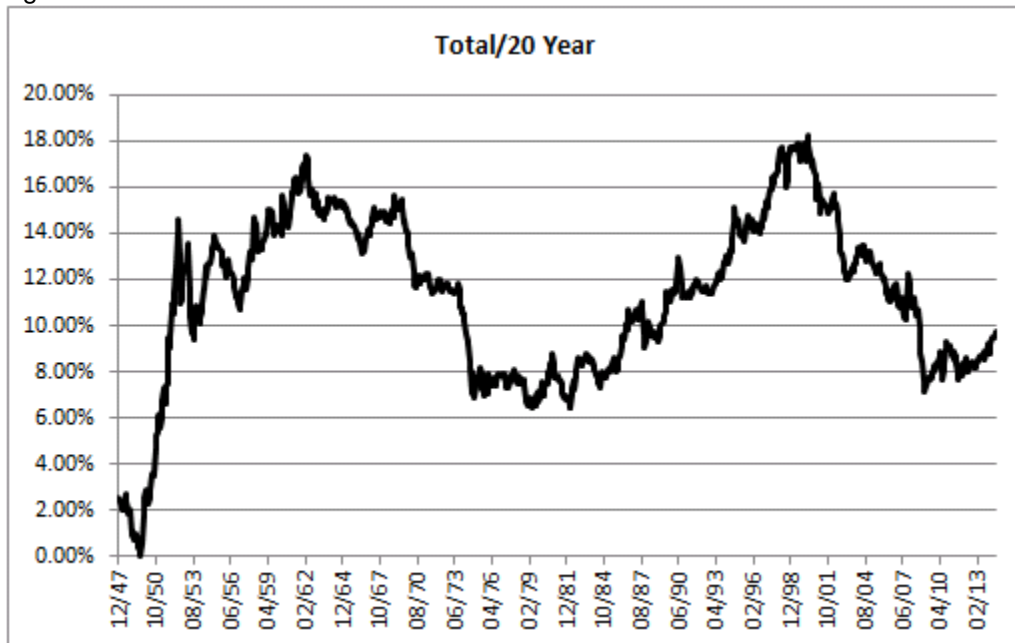


Figure 8.20: 20-Year Annualized Total Return for S&P 500 Inflation Adjusted

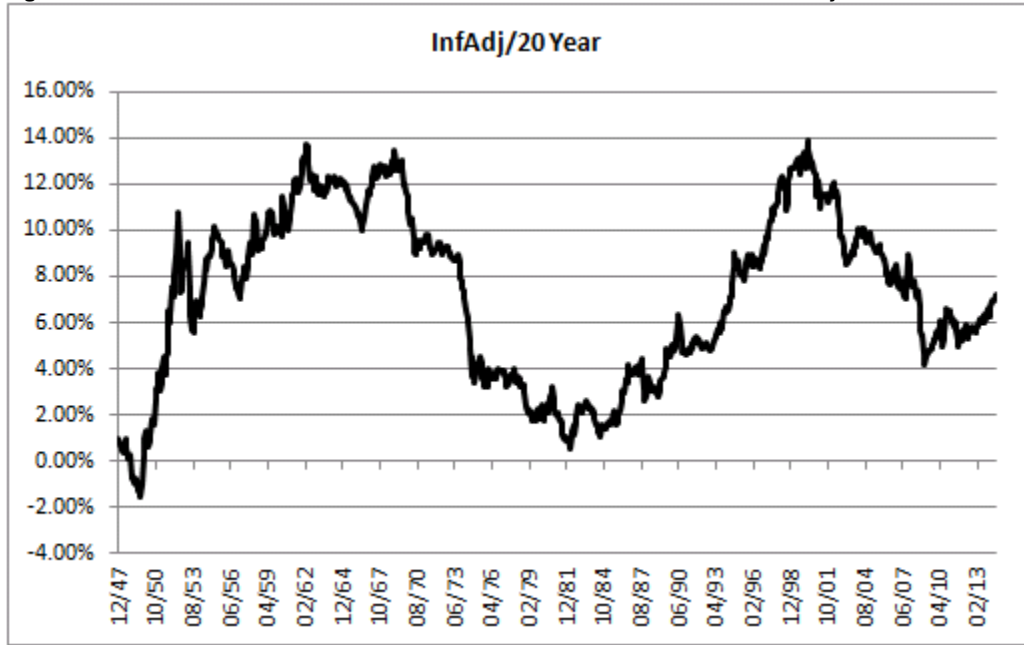


Figure 8.22: Distribution of Inflation Adjusted 20-Year Returns by Quartile

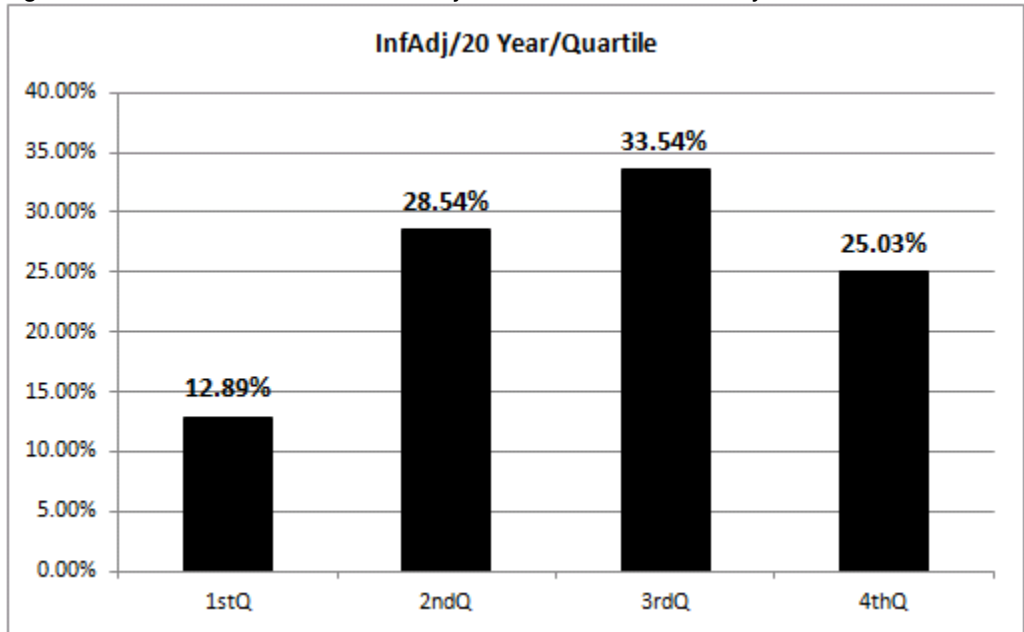


Figure 8.23: Distribution of Inflation Adjusted 20-Year Returns by Decile

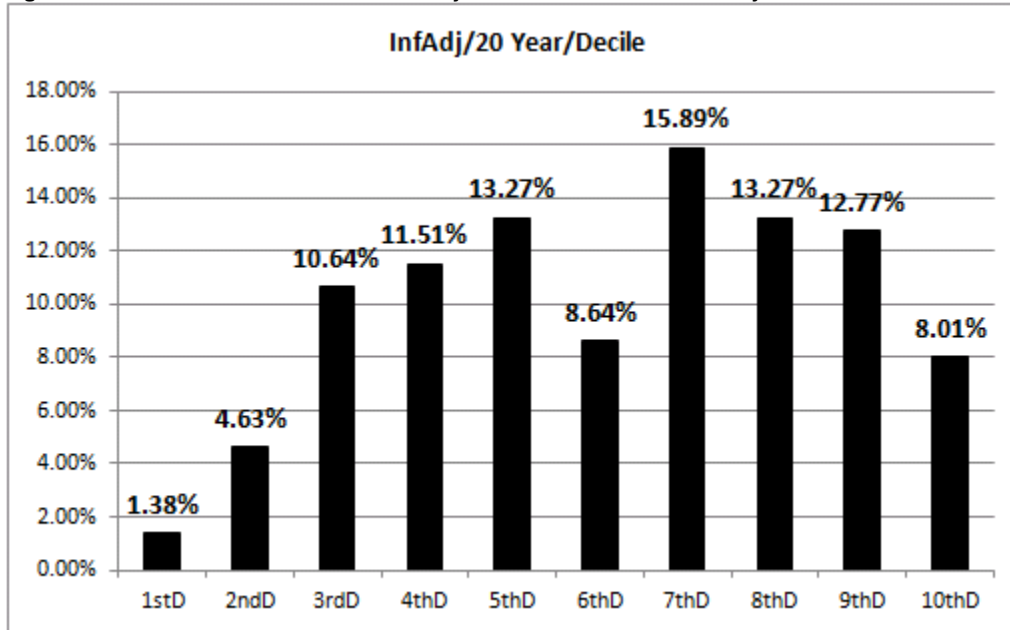


Figure 8.24: Distribution of Inflation Adjusted 20-Year Returns by Standard Deviation

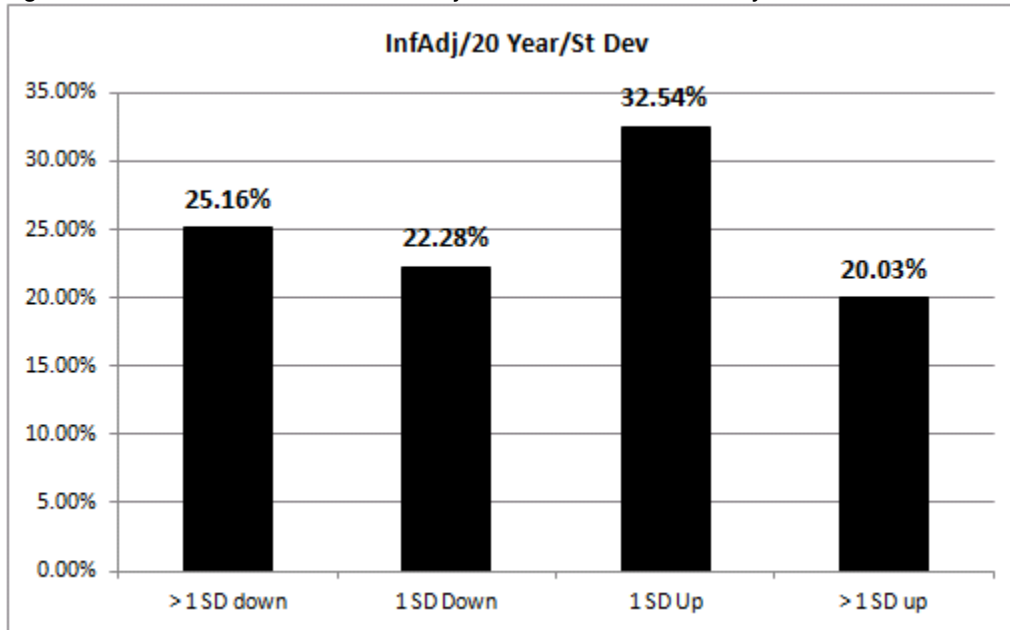


Figure 8.25: Distribution of Inflation Adjusted 20-Year Returns by Percentage Ranges

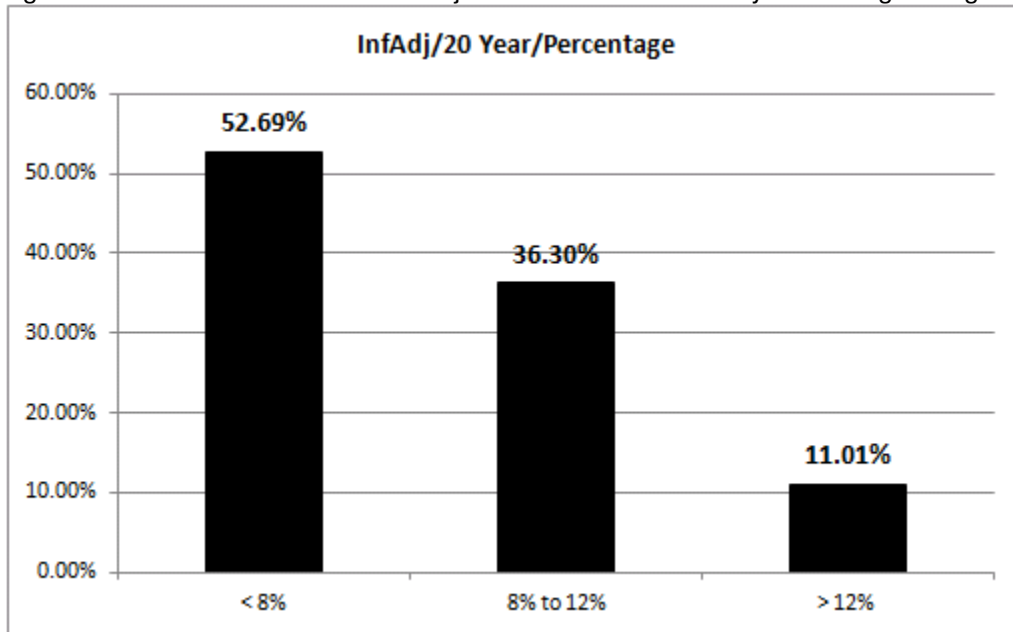


Figure 11.8: S&P 500 Distribution of Drawdowns Greater than 15 Percent

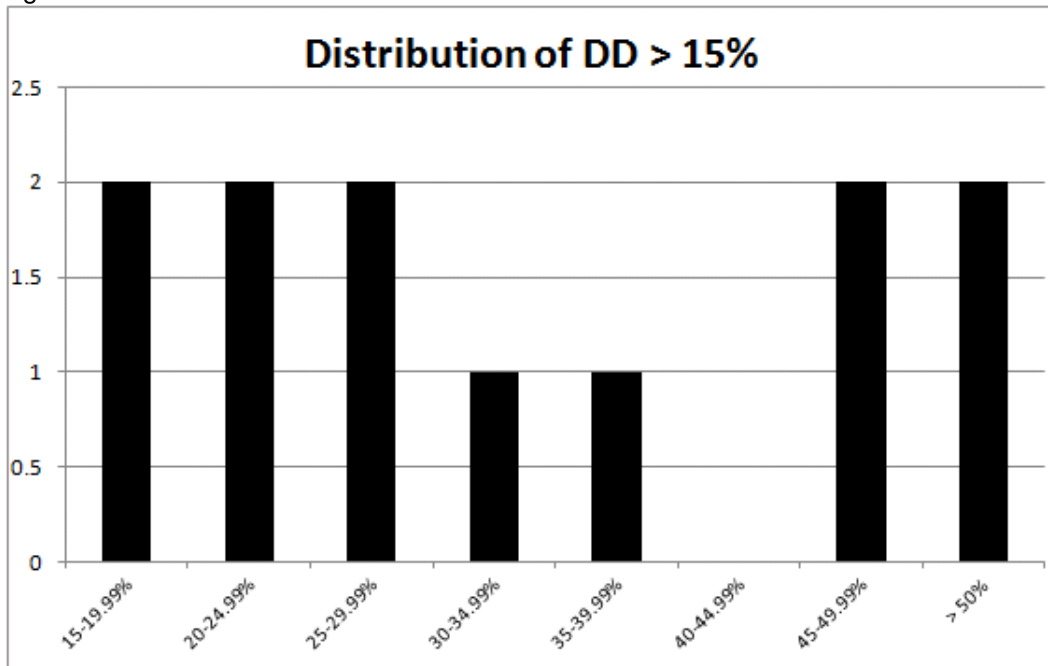


Figure 11.9: S&P 500 Distribution of All Drawdowns

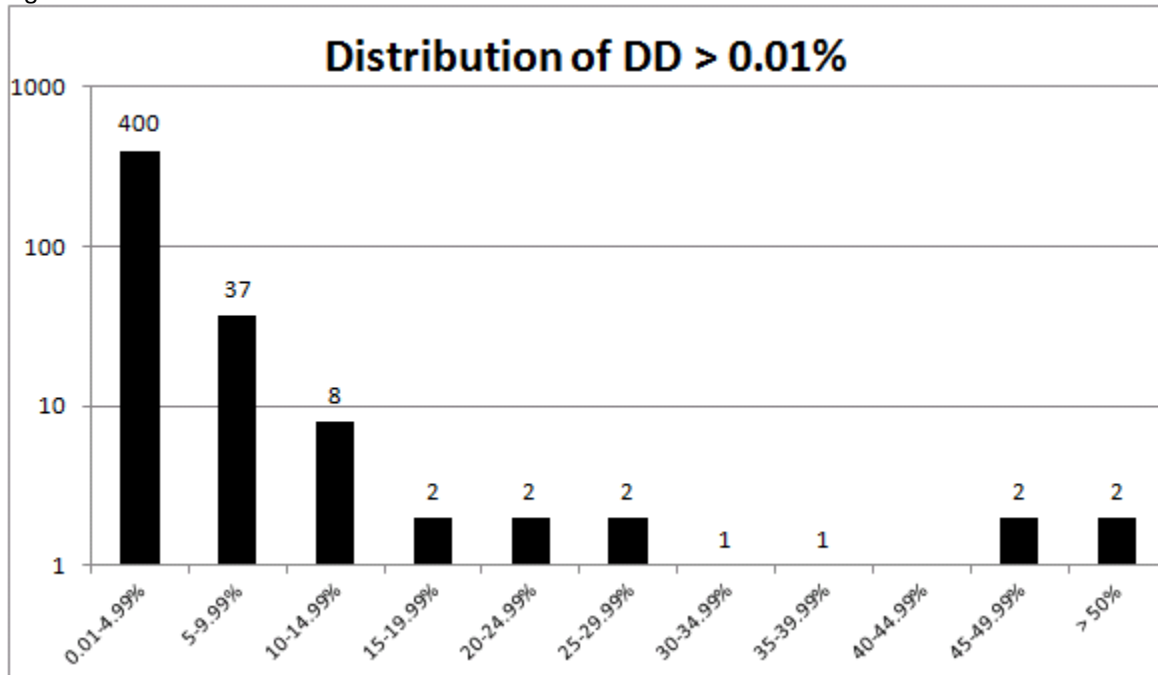


Figure 11.13: Dow Industrials Distribution of Drawdowns Greater than 15 Percent

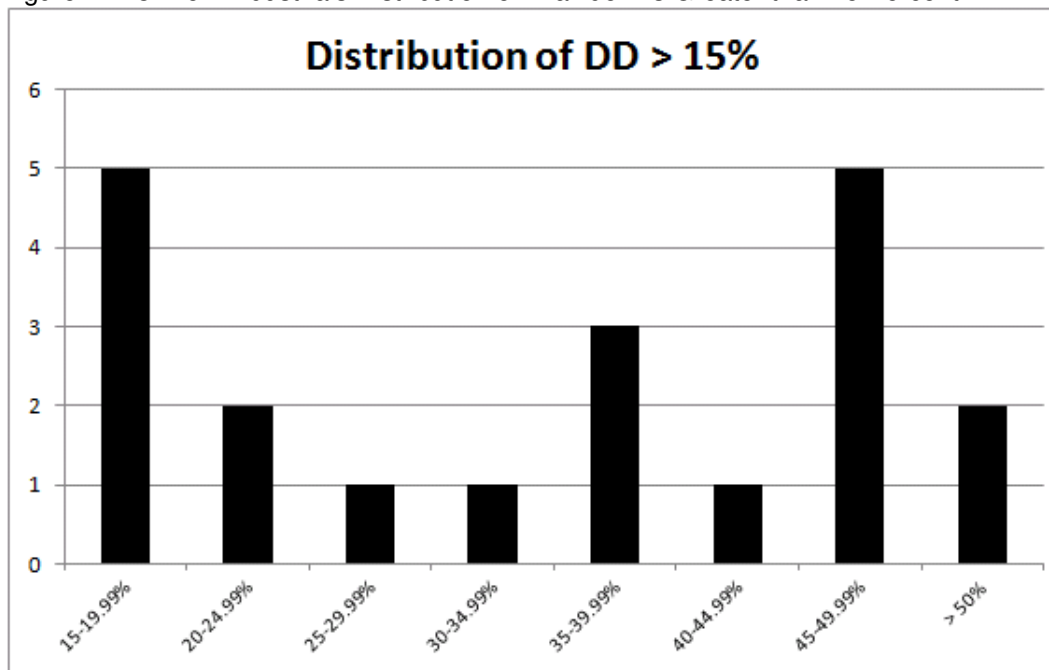


Figure 11.14: Dow Industrials Distribution of All Drawdowns

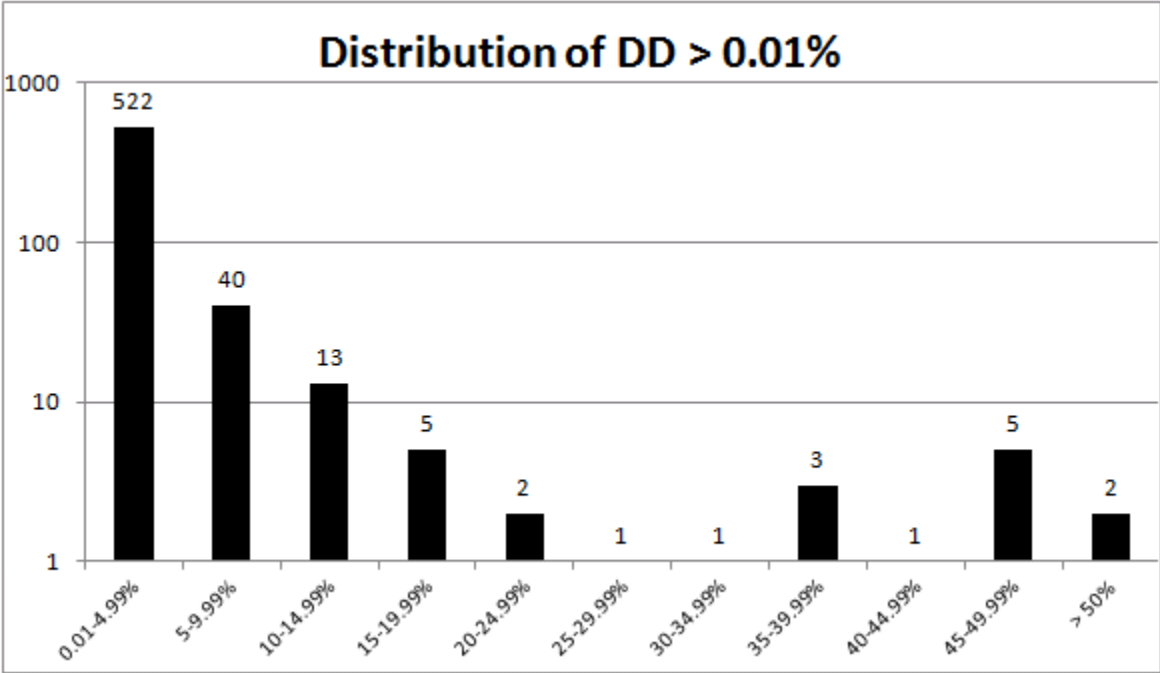


Table 10.9: Trend Analysis on 109 Market Indices

	Trendness One			Trendness Two						Trendless Analysis			
	Trendness		Avg.	Up Trendness			While in Trend			Up	Down	Trendless	Rank
	U / D	U		WtdAvg	Rank	Up/Tot	Dn/Tot	Up Rank					
	Average	Rank	U / D	WtdAvg	Rank	Up/Tot	Dn/Tot	Up Rank	Up	Down	Trendless	Rank	
AMEX Composite	80.99	35	3.67	296.68	19	77.91%	22.09%	16	63.10%	17.89%	19.01%	61	
AMEX Oil Index	76.13	51	2.26	172.03	66	68.81%	31.19%	66	52.38%	23.75%	23.87%	45	
AMEX Pharmaceutical Index	82.21	30	2.35	193.16	59	69.52%	30.48%	64	57.15%	25.06%	17.79%	66	
Argentina MerVal	54.89	90	3.11	170.59	67	72.24%	27.76%	52	39.66%	15.24%	45.11%	6	
Australia All Ordinaries	89.62	6	2.69	241.34	41	72.37%	27.63%	50	65.00%	24.82%	10.18%	90	
Austria ATX	78.26	46	2.41	188.24	61	69.40%	30.60%	65	54.32%	23.95%	21.74%	50	
Belgium BEL-20	81.74	33	2.88	235.72	43	73.86%	26.14%	41	60.38%	21.37%	18.26%	63	
Brazil Bovespa	56.57	89	2.52	142.49	77	68.25%	31.75%	69	38.61%	17.96%	43.43%	7	
Chile IGPA General Index	88.58	11	1.74	154.23	72	63.35%	36.65%	78	56.11%	32.47%	11.42%	85	
Chile IPSA	79.10	41	1.62	128.06	80	60.98%	39.02%	81	48.23%	30.87%	20.90%	55	
China Shanghai Composite	64.28	83	1.14	73.03	90	52.75%	47.25%	89	33.91%	30.37%	35.72%	13	
CRB Index	92.73	3	1.32	122.71	81	56.64%	43.36%	84	52.52%	40.21%	7.27%	93	
Czech Republic PX	72.60	64	1.99	144.16	76	65.60%	34.40%	74	47.63%	24.98%	27.40%	32	
Denmark Copenhagen 20	76.53	49	3.73	285.31	25	76.53%	23.47%	28	58.57%	17.96%	23.47%	47	
DJ Wilshire US Small Cap	69.58	75	5.08	353.72	10	77.68%	22.32%	20	54.05%	15.53%	30.42%	21	
Dow Industrials 1885	86.97	13	2.72	236.40	42	72.32%	27.68%	51	62.90%	24.07%	13.03%	83	
Dow Jones Composite	79.43	38	5.04	400.56	8	81.38%	18.62%	6	64.64%	14.79%	20.57%	58	
Dow Jones Euro Stoxx	73.23	62	3.39	248.07	36	74.03%	25.97%	38	54.22%	19.02%	26.77%	34	
Dow Jones Euro Stoxx 50	70.31	71	3.45	242.82	39	72.43%	27.57%	48	50.93%	19.38%	29.66%	25	
Dow Jones Stoxx	78.55	44	3.68	289.29	21	76.89%	23.11%	24	60.40%	18.15%	21.45%	52	
Dow Jones Transport	72.33	65	3.42	247.03	37	73.90%	26.10%	40	53.45%	18.87%	27.67%	31	
Dow Jones Utilities	84.95	17	2.85	242.03	40	73.29%	26.71%	44	62.26%	22.69%	15.05%	79	
Dow Jones Wilshire 5000 Composite Index	90.27	4	3.63	327.92	17	77.88%	22.12%	17	70.30%	19.97%	9.73%	92	
Dow Jones Wilshire REIT Total Return Index	63.91	84	5.56	355.65	9	79.69%	20.31%	11	50.93%	12.98%	36.09%	12	
EURONEXT 100	74.64	56	5.74	428.72	6	82.70%	17.30%	4	61.73%	12.91%	25.36%	40	
Finland HSE General Index	67.14	78	2.71	182.08	62	71.84%	28.16%	54	48.24%	18.91%	32.86%	18	
France CAC 40	71.60	67	2.94	210.74	51	73.17%	26.83%	45	52.39%	19.21%	28.40%	29	
Germany DAX	66.51	80	7.57	503.42	1	80.04%	19.96%	10	53.24%	13.28%	33.49%	16	
Global Dow	81.72	34	4.07	332.39	15	79.24%	20.76%	12	64.76%	16.96%	18.28%	62	
Gold and Silver Mining	44.80	93	0.85	38.15	94	47.99%	52.01%	93	21.50%	23.30%	55.20%	3	
Gold Base Price Handy & Harman	50.94	91	1.26	64.27	91	55.80%	44.20%	85	28.42%	22.51%	49.06%	5	
Gold Jones (Euro Stoxx)	73.23	62	3.39	248.07	36	74.03%	25.97%	38	54.22%	19.02%	26.77%	34	
Gold Mining Stocks	50.40	92	1.02	51.17	92	51.72%	48.28%	91	26.07%	24.33%	49.60%	2	
Green General Share	63.28	85	1.34	84.74	89	55.60%	44.40%	86	35.19%	28.10%	36.72%	11	
Hanoi SE Index	63.02	86	0.75	47.42	93	41.26%	58.74%	95	26.00%	37.02%	36.98%	10	
Hong Kong Hang Seng	71.40	69	2.82	201.21	56	72.41%	27.59%	49	51.70%	19.70%	28.60%	27	
Ibex 35	71.49	68	2.86	204.26	55	71.82%	28.18%	55	51.34%	20.15%	28.51%	28	
India BSE 30	61.87	87	2.70	167.03	68	71.00%	29.00%	57	43.93%	17.94%	38.13%	9	
Indonesia Jakarta Composite	73.95	58	2.43	180.06	63	69.72%	30.28%	63	51.56%	22.39%	26.05%	38	
Israel TA-100	79.38	39	4.20	333.05	14	76.20%	23.80%	31	60.49%	18.89%	20.62%	57	
Italy FTSE MIB Index	58.56	88	2.58	151.08	74	67.03%	32.97%	73	39.25%	19.31%	41.44%	8	
Japan Nikkei 225	76.38	50	2.27	173.08	65	67.82%	32.18%	70	51.79%	24.58%	23.62%	46	
Johannesburg All Shares	77.82	47	5.75	447.09	2	83.18%	16.82%	2	64.73%	13.09%	22.18%	49	
Major Market Index	82.88	26	3.99	331.03	16	79.19%	20.81%	13	65.64%	17.24%	17.12%	70	
Malaysia KLESE Composite	82.53	28	2.42	200.12	58	70.24%	29.76%	61	57.96%	24.56%	17.47%	68	
Mexico IPC	71.21	70	3.78	289.29	30	76.59%	23.41%	27	54.54%	16.67%	28.79%	26	
Morgan Stanley Cyclical Index	71.74	66	2.95	211.35	50	71.38%	28.62%	56	51.21%	20.53%	28.26%	30	
MSCI EAFE	89.97	5	2.34	210.67	52	69.86%	30.14%	62	62.85%	27.11%	10.03%	91	
MSCI EM	83.53	23	2.41	201.20	57	70.38%	29.62%	60	58.79%	24.74%	16.47%	73	
NASDAQ 100	68.33	77	3.88	265.16	33	77.74%	22.26%	18	53.12%	15.21%	31.67%	19	
NASDAQ Composite	82.15	31	2.75	225.85	48	73.00%	27.00%	46	59.97%	22.18%	17.85%	65	
Netherlands AEX General	78.41	45	2.98	233.79	46	73.85%	26.15%	42	57.90%	20.51%	21.99%	51	
Norway Oslo Stock Exchange All Share Compos	78.81	42	4.38	344.81	13	81.00%	19.00%	8	63.83%	14.98%	21.19%	54	
Norway Oslo Stock Exchange OBX Top 25	66.08	82	6.59	435.34	3	86.20%	13.80%	1	56.96%	9.12%	33.92%	14	
NYSE Composite	89.81	7	3.01	269.92	29	74.77%	25.23%	36	67.15%	22.66%	10.19%	89	
Pakistan Karachi 100	66.92	79	2.64	176.47	64	68.26%	31.74%	68	45.68%	21.24%	33.08%	17	
Peru Lima General	77.21	48	1.83	141.66	78	64.54%	35.46%	77	49.84%	27.38%	22.79%	48	
Philippines PSE Composite	73.82	59	2.06	152.25	75	65.36%	34.64%	76	48.25%	25.38%	26.18%	37	
Russell 1000	85.22	16	5.04	429.45	8	81.63%	18.37%	8	69.57%	15.65%	14.78%	60	
Russell 1000 Growth	75.46	55	3.68	278.00	27	77.69%	22.31%	19	58.63%	16.84%	24.54%	41	
Russell 1000 Value	75.88	54	3.11	235.66	44	75.10%	24.90%	34	56.99%	18.89%	24.12%	42	
Russell 2000	83.15	25	2.48	205.91	54	70.83%	29.17%	58	58.90%	24.25%	16.85%	71	
Russell 2000 Growth Index	81.92	32	2.82	230.74	47	73.47%	26.53%	43	60.18%	21.74%	18.08%	64	
Russell 2000 Value Index	87.80	12	4.95	434.41	4	82.76%	17.24%	3	72.66%	15.13%	12.20%	84	
Russell 3000	85.63	15	4.86	415.74	7	81.22%	18.78%	7	69.55%	16.08%	14.37%	81	
S&P 100 Index	84.74	19	3.13	265.07	34	74.96%	25.04%	35	63.52%	21.22%	15.26%	77	
S&P 1500 INDEX	83.22	24	4.23	352.40	11	78.72%	21.28%	14	65.51%	17.71%	16.78%	72	
S&P 400 Index	76.12	52	3.82	290.66	20	77.51%	22.49%	21	59.00%	17.12%	23.88%	44	
S&P 500 Index	89.60	9	2.62	234.87	45	72.18%	27.82%	53	64.67%	24.93%	10.40%	87	
S&P 600 Index	80.26	36	3.06	245.83	38	74.36%	25.64%	37	59.68%	20.57%	19.74%	60	
S&P CNX NIFTY	66.47	81	2.90	192.65	60	72.51%	27.49%	47	48.20%	18.27%	33.53%	15	
S&P CON 1500	79.17	47	4.68	346.54	12	80.48%	19.52%	8	59.35%	14.45%	25.77%	39	
S&P Equal Weight	79.14	40	3.61	285.44	34	77.21%	22.79%	27	61.10%	18.04%	20.86%	56	
S&P MIDCAP INDEX	83.60	22	3.45	288.08	22	76.49%	23.51%	29	63.95%	19.65%	16.40%	74	
S&P/TSX 60 CAPPED INDEX	82.57	27	3.80	313.76	18	78.69%	21.31%	15	64.98%	17.60%	17.43%	69	
S&P/TSX 60 INDEX	79.81	37	3.36	267.95	31	76.64%	23.36%	25	61.16%	18.65%	20.19%	59	
S&P/TSX Composite	88.73	10	2.88	255.22	35	73.91%	26.09%	39	65.58%	23.15%	11.27%	86	
Silver - Handy & Harmon base price	69.73	73	1.24	86.43	87	55.30%	44.70%	87	38.56%	31.17%	30.27%	23	
Singapore Straits Times	73.71	61	1.80	132.69	79	62.40%	37.60%	80	45.99%	27.72%	26.29%	35	
Slovakia SAX	89.70	72	1.18	105.64	86	53.97%	46.03%	88	48.41%	41.29%	10.30%	88	
South Korea Seoul Composite	69.48	76	1.72	119.65	82	62.52%	37.48%	79	43.44%	26.04%	30.52%	20	
Spain Madrid General	78.56	43	2.11	165.47	69	67.18%	32.82%	72	52.77%	25.78%	21.44%	53	
Sri Lanka All Share	84.21	20	1.37	115.34	83	57.65%	42.35%	83	48.55%	35.67%	15.79%	76	
Swedish OMX 30	73.72	60	3.76	277.49	28	76.60%	23.40%	26	56.47%	17.25%	26.28%	36	
Swiss Franc Exchange Rate	94.12	1	0.90	84.78	88	47.26%	52.74%	94	44.48%	49.64%	5.88%	95	
Switzerland Swiss Market	82.29	29	3.39	278.83	26	75.48%	24.52%	33	62.11%	20.18%	17.71%	67	
Taiwan Taiwan Weighted	69.72	74	2.33	162.62	71	68.70%	31.30%	67	47.90%	21.83%	30.28%	22	
Thailand SET	73.18	63	2.22	162.64	70	67.55%	32.45%	71	49.43%	23.75%	26.82%	33	
Turkey ISE National-100	36.05	95	6.10	219.99	49	77.02%	22.98%	23	27.76%	8.29%	63.95%	1	
United Kingdom FTSE 100	84.02	21	3.18	266.77	32	75.69%	24.31%	32	63.59%	20.43%	15.98%	75	
US Dollar Index	93.00	2	1.11	103.21	85	52.59%	47.41%	90	48.91%	44.09%	7.00%	94	
Value Line Index (Arith)	86.78	14	3.30	286.05	23	76.21%	23.79%	30	66.13%	20.65%	13.22%	82	
Value Line Index (Geometric)	84.78	18	2.45	207.90	53	70.47%	29.53%	59	59.74%	25.04%	15.22%	78	
Venezuela IBC	76.10	53	1.94	147.90	75	65.37%	34.63%	75	49.75%	26.35%	23.90%	43	
Viet Nam Index	70.17	72	1.35	95.07	86	57.69%	42.31%	82	40.48%	29.69%	29.83%	24	
Statistics													
Mean	75.63		3.10	236.15		71.35%	28.65%		54.18%	21.17%	24.65%		
Avg Deviation	8.51		1.00	80.56		6.58%	6.58%		8.59%	4.42%	8.33%		
Median	77.												

Table 11.2: S&P 500 Drawdown Decline

DRAWDOWN DECLINE							
Drawdown Range		Average Max Drawdown	Average Days in Decline	Average Months in Decline	Total Days in Decline	Total Months in Decline	Percentage of time spent in Decline
-100%	-20%	-40.88%	359	17.07	3,585	171	16.50%
-15%	-19.99%	-19.63%	47	2.21	93	4	0.43%
-10%	-14.99%	-11.54%	102	4.84	813	39	3.74%
-5%	-9.99%	-6.93%	23	1.08	842	40	3.88%
-0.01%	-4.99%	-1.19%	4	0.19	1,619	77	7.45%
All DDs		-2.79%	15	0.72	6,952	331	31.99%

Table 11.3: S&P 500 Drawdown Recovery

DRAWDOWN RECOVERY							
Drawdown Range		Average Gain to Recovery	Average Days to Recover	Average Months to Recover	Total Days in Recovery	Total Months in Recovery	Percentage of time spent in Recovery
-100%	-20%	69.14%	1,081	51.48	10,811	514.81	49.75%
-15%	-19.99%	24.42%	72	3.40	143	6.81	0.66%
-10%	-14.99%	13.04%	53	2.52	424	20.19	1.95%
-5%	-9.99%	7.45%	30	1.45	1,126	53.62	5.18%
-0.01%	-4.99%	1.20%	3	0.14	1,191	56.71	5.48%
All DDs		2.87%	30	1.43	13,695	652.14	63.03%

Table 11.4: S&P 500 Drawdown Duration

DRAWDOWN DURATION						
Drawdown Range		Average Duration of Drawdown (Days)	Average Duration of Drawdown (Months)	Total Duration of Drawdown (Days)	Total Duration of Drawdown (Months)	Percentage of time spent in Drawdown
-100%	-20%	1,440	68.55	14,396	685.52	66.25%
-15%	-19.99%	118	5.62	236	11.24	1.09%
-10%	-14.99%	155	7.36	1,237	58.90	5.69%
-5%	-9.99%	53	2.53	1,968	93.71	9.06%
-0.01%	-4.99%	7	0.33	2,810	133.81	12.93%
All DDs		45	2.15	20,647	983.19	95.02%

Table 11.10: S&P 500 Bear Markets since 1928

Bear Markets in S&P 500 from 12/30/1927 to 6/30/14												
Largest to Smallest	Decline from Peak	Return Required for Recovery	Peak Date	Trough Date	Recovery Date	Decline in Days	Decline in Months	Recovery in Days	Recovery in Months	Bear Duration in Days	Bear Duration in Months	Average Drawdown
1	-86.19%	624.09%	9/16/1929	6/1/1932	9/22/1954	678	32.29	5572	265.33	6250	297.62	-52.96%
2	-56.78%	131.35%	10/9/2007	3/9/2009	3/28/2013	355	16.90	1022	48.67	1377	65.57	-22.25%
3	-49.15%	96.65%	3/24/2000	10/9/2002	5/30/2007	637	30.33	1166	55.52	1803	85.86	-22.54%
4	-48.20%	93.06%	1/11/1973	10/3/1974	7/17/1980	436	20.76	1462	69.62	1898	90.38	-19.00%
5	-36.06%	56.40%	11/29/1968	5/26/1970	3/6/1972	369	17.57	451	21.48	820	39.05	-13.30%
6	-33.51%	50.40%	8/25/1987	12/4/1987	7/26/1989	71	3.38	414	19.71	485	23.10	-17.17%
7	-27.97%	38.84%	12/12/1961	6/26/1962	9/3/1963	135	6.43	299	14.24	434	20.67	-10.67%
8	-27.11%	37.20%	11/28/1980	8/12/1982	11/3/1982	430	20.48	58	2.76	488	23.24	-12.44%
9	-22.18%	28.50%	2/9/1966	10/7/1966	5/4/1967	167	7.95	143	6.81	310	14.76	-9.32%
10	-21.63%	27.60%	8/2/1956	10/22/1957	9/24/1958	307	14.62	234	11.14	541	25.76	-10.06%
Average	-40.88%	69.14%				358.50	17.07	1082.10	51.53	1440.60	68.60	-18.97%
Avg Ex 29	-35.84%	55.87%				323.00	15.38	583.22	27.77	906.22	43.15	-15.19%
Minimum	-21.63%	27.60%				71.00	3.38	58.00	2.76	310.00	14.76	-52.96%
Maximum	-86.19%	624.09%				678.00	32.29	5572.00	265.33	6250.00	297.62	-9.32%
Std. Dev.	19.95%	-16.63%				200.78	9.56	1647.29	78.44	1788.28	85.16	12.90%
Median	-34.79%	53.34%				362.00	17.24	432.50	20.60	680.50	32.40	-15.23%

Table 11.15: Dow Industrials Drawdown Decline

DRAWDOWN DECLINE						
Drawdown Range	Average Max Drawdown	Average Days in Decline	Average Months in Decline	Total Days in Decline	Total Months in Decline	Percentage of time spent in Decline
-100% -20%	-41.79%	557	26.54	8,360	398	23.51%
-15% -19.99%	-17.68%	165	7.88	827	39	2.33%
-10% -14.99%	-12.25%	43	2.07	564	27	1.59%
-5% -9.99%	-7.02%	23	1.11	913	43	2.57%
-0.01% -4.99%	-1.14%	4	0.17	1,905	91	5.36%
All DDs	-2.93%	21	1.01	12,569	599	35.35%

Table 11.16: Dow Industrials Drawdown Recovery

DRAWDOWN RECOVERY						
Drawdown Range	Average Gain to Recovery	Average Days to Recover	Average Months to Recover	Total Days in Recovery	Total Months in Recovery	Percentage of time spent in Recovery
-100% -20%	71.78%	1,173	55.86	17,597	837.95	49.49%
-15% -19.99%	21.48%	125	5.97	627	29.86	1.76%
-10% -14.99%	13.95%	73	3.46	944	44.95	2.66%
-5% -9.99%	7.55%	33	1.57	1,285	61.19	3.61%
-0.01% -4.99%	1.16%	2	0.11	1,199	57.10	3.37%
All DDs	3.02%	36	1.73	21,652	1,031.05	60.90%

Table 11.17: Dow Industrials Drawdown Duration

DRAWDOWN DURATION						
Drawdown Range		Average Duration of Drawdown (Days)	Average Duration of Drawdown (Months)	Total Duration of Drawdown (Days)	Total Duration of Drawdown (Months)	Percentage of time spent in Drawdown
-100%	-20%	1,730	82.40	25,957	1,236.05	73.01%
-15%	-19.99%	291	13.85	1,454	69.24	4.09%
-10%	-14.99%	116	5.52	1,508	71.81	4.24%
-5%	-9.99%	56	2.68	2,198	104.67	6.18%
-0.01%	-4.99%	6	0.28	3,104	147.81	8.73%
All DDs		58	2.74	34,221	1,629.57	96.25%

Table 11.23: Dow Industrials Bear Markets since 1885

Bear Markets in Dow Jones Industrials from 2/17/1885 to 6/30/14												
Largest to Smallest	Decline from Peak	Return Required for Recovery	Peak Date	Trough Date	Recovery Date	Decline in Days	Decline in Months	Recovery in Days	Recovery in Months	Bear Duration in Days	Bear Duration in Months	Average Drawdown
1	-89.19%	824.72%	9/3/1929	7/8/1932	11/23/1954	845	40.24	6464	307.81	7309	348.05	-55.98%
2	-53.78%	116.35%	10/9/2007	3/9/2009	3/5/2013	355	16.90	997	47.48	1352	64.38	-20.10%
3	-48.54%	94.34%	1/19/1906	11/15/1907	7/28/1915	552	26.29	2192	104.38	2744	130.67	-18.48%
4	-46.64%	87.42%	6/4/1890	8/8/1896	1/20/1899	1872	89.14	735	35.00	2607	124.14	-22.33%
5	-46.58%	87.20%	11/3/1919	8/24/1921	12/31/1924	540	25.71	1006	47.90	1546	73.62	-24.10%
6	-46.14%	85.67%	6/17/1901	11/9/1903	3/24/1905	713	33.95	410	19.52	1123	53.48	-22.45%
7	-45.08%	82.08%	1/11/1973	12/6/1974	11/3/1982	481	22.90	1998	95.14	2479	118.05	-17.30%
8	-40.13%	67.02%	11/21/1916	12/19/1917	7/9/1919	320	15.24	459	21.86	779	37.10	-21.39%
9	-37.85%	60.89%	1/14/2000	10/9/2002	10/3/2006	685	32.62	1003	47.76	1688	80.38	-13.64%
10	-36.58%	57.67%	2/9/1966	5/26/1970	11/10/1972	1052	50.10	625	29.76	1677	79.86	-12.68%
11	-36.13%	56.57%	8/25/1987	10/19/1987	8/24/1989	38	1.81	468	22.29	506	24.10	-19.34%
12	-31.76%	46.54%	9/5/1899	9/24/1900	6/3/1901	314	14.95	202	9.62	516	24.57	-15.97%
13	-27.10%	37.17%	12/13/1961	6/26/1962	9/5/1963	134	6.38	301	14.33	435	20.71	-9.51%
14	-21.16%	26.83%	7/17/1990	10/11/1990	4/17/1991	61	2.90	129	6.14	190	9.05	-10.77%
15	-20.13%	25.20%	12/3/1886	4/2/1888	4/25/1890	398	18.95	623	29.67	1021	48.62	-8.08%
Average	-41.79%	71.78%				557.33	32.26	1174.13	70.81	1731.47	103.07	-22.53%
Avg Ex 29	-38.40%	62.34%				536.79	25.56	796.29	37.92	1333.07	64.48	-16.87%
Minimum	-20.13%	25.20%				38.00	1.81	129.00	6.14	190.00	9.05	-55.98%
Maximum	-89.19%	824.72%				1872.00	89.14	6464.00	307.81	7309.00	348.05	-8.08%
Std. Dev.	16.48%	-14.15%				461.33	21.97	1580.65	75.27	1741.53	82.93	11.27%
Median	-40.13%	67.02%				481.00	22.90	625.00	29.76	1352.00	64.38	-18.48%